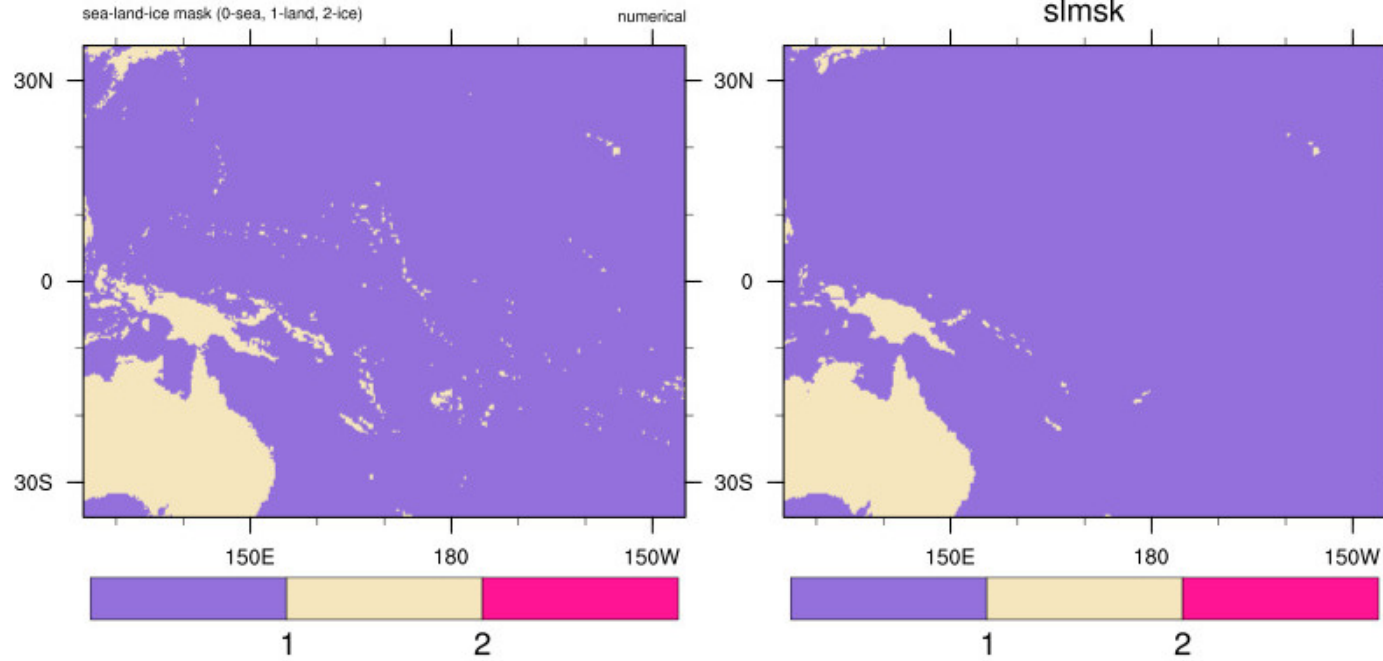


Land mask and surface temperature issues in FV3 (as-is, no fixes)

- 2012-07-01 case
- Ice "snapshot" vs FV3 forecast output

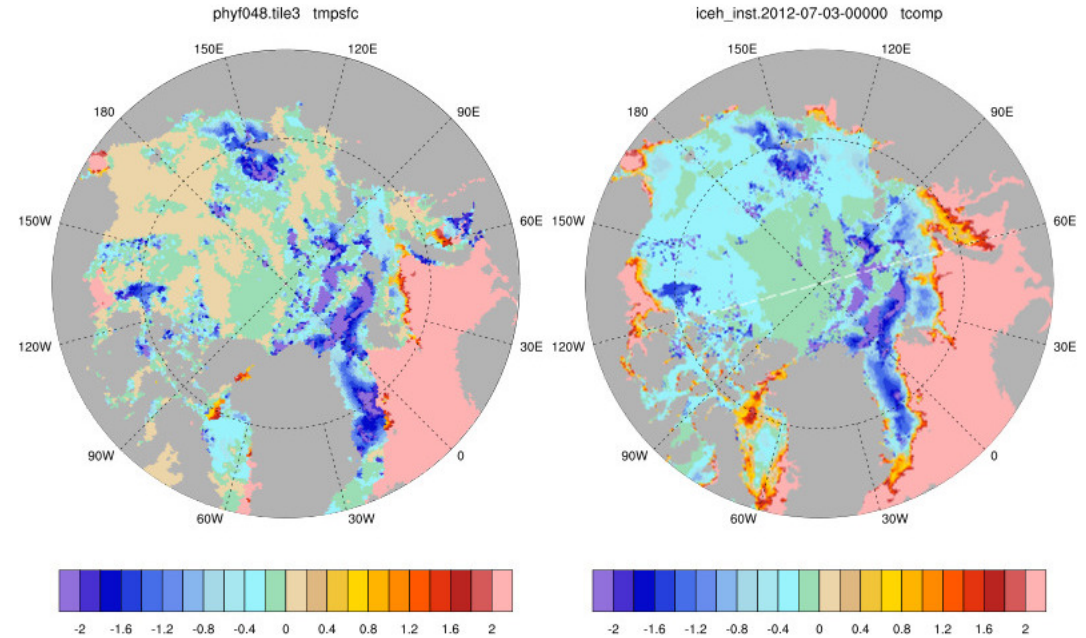
NEMS_upfv3 tile4



Land mask from
phyf006.tile4.nc

Land mask from
oro_data.tile4.nc

FMC_Testing/NEMS_upfv3 2012-07-01

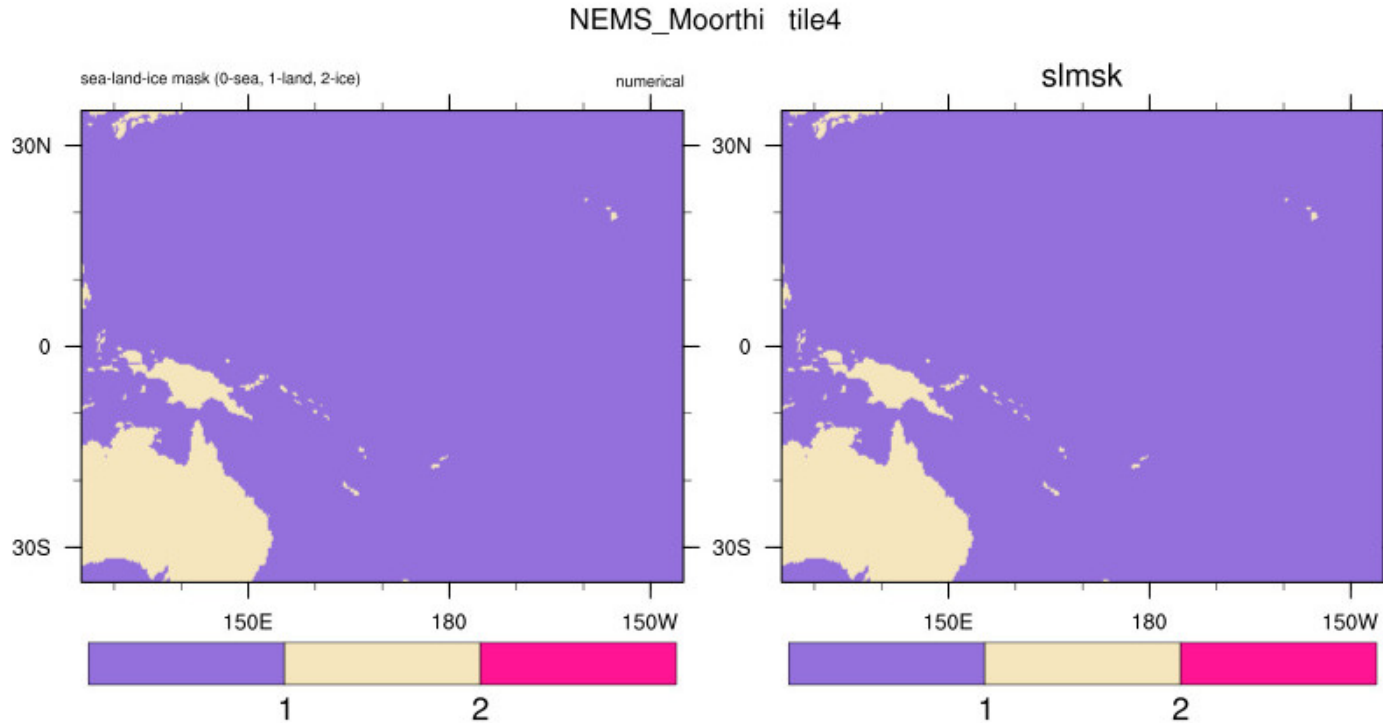


Tmpsfc from FV3 at
hour 48

CICE Tcomposite:
 $A_i * T_{sfc} + (1 - a_i) * SST$

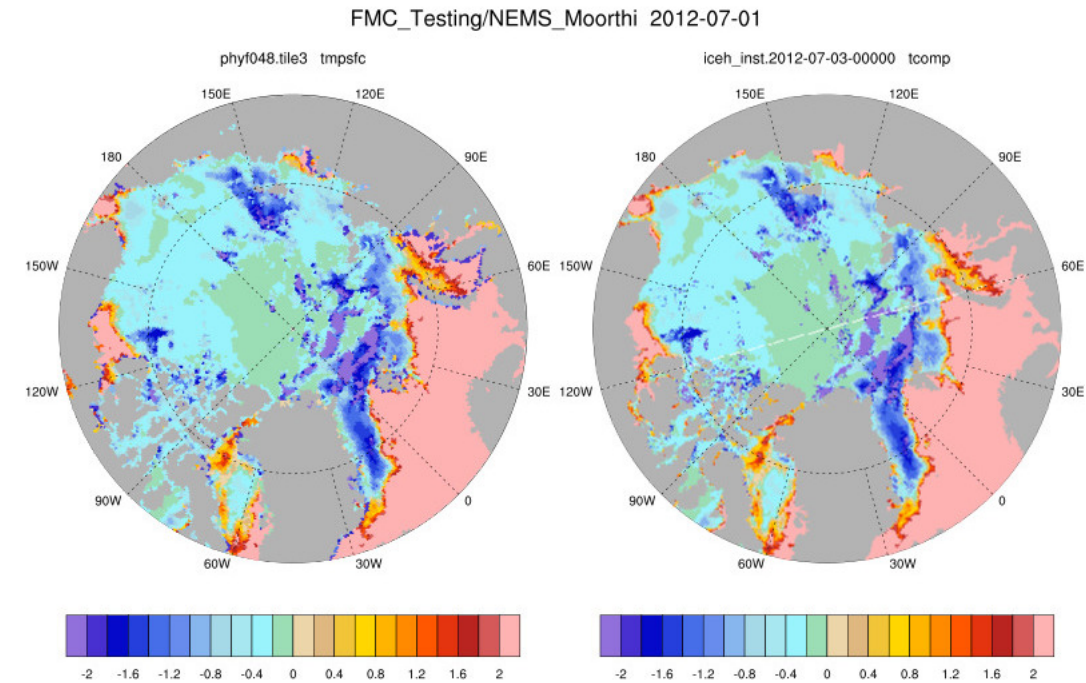
Fixes provided by Moorthi for land mask issue and Tsfc issue + 2 additional fixes "for safety" (call this Moorthi-4fix)

- Land mask fix works, Tsfc fix "almost" works



Land mask from
phyf006.tile4.nc

Land mask from
oro_data.tile4.nc



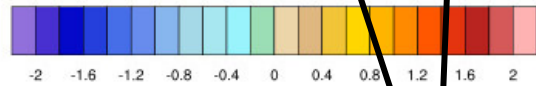
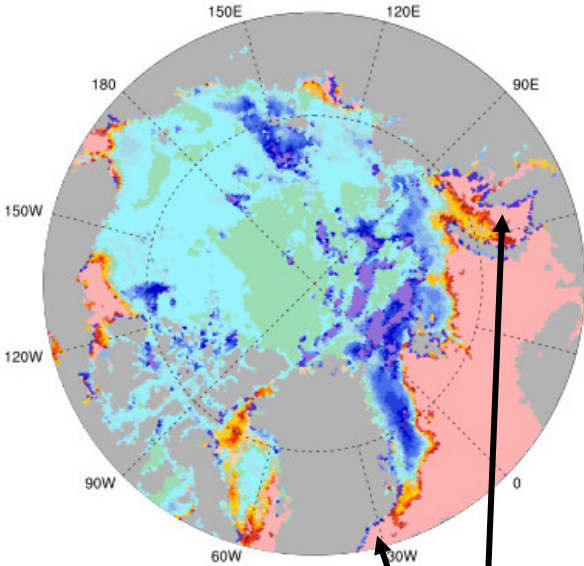
Tmpsfc from FV3 at
hour 48

CICE Tcomposite:
 $A_i * Tsfc + (1 - a_i) * SST$

Still two issues in Moorthi-4fix: Surface temperature and Ice concentration vs CICE

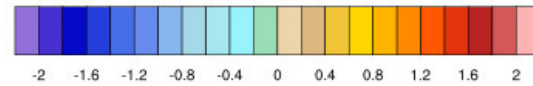
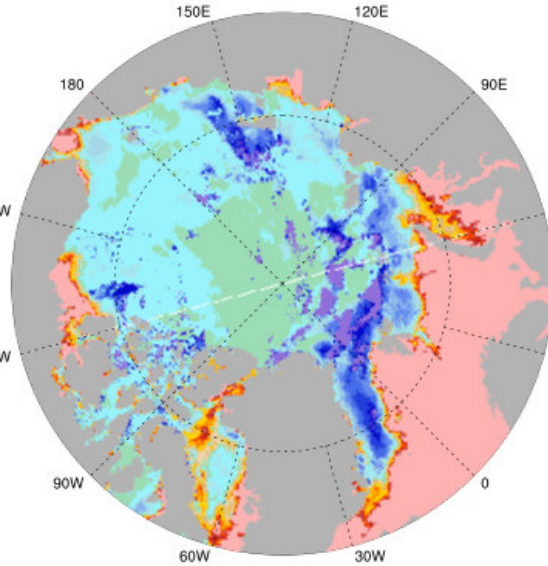
FMC_Testing/NEMS_Moorthi 2012-07-01

phyf048.tile3 tmpsfc



FV3: Cold coastal ribbons

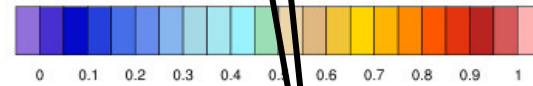
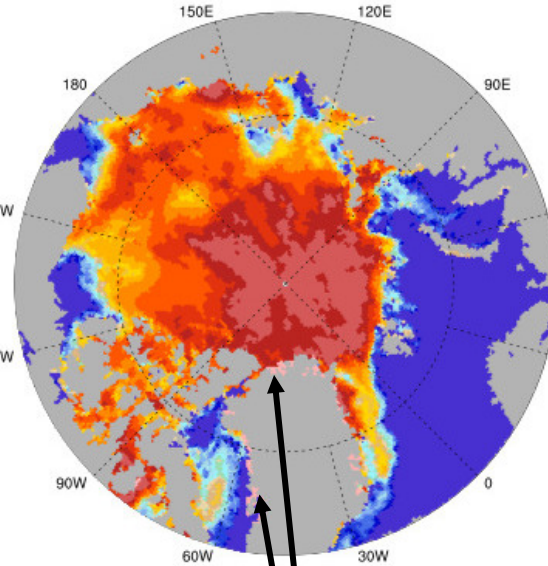
iceh_inst.2012-07-03-00000 tcomp



CICE

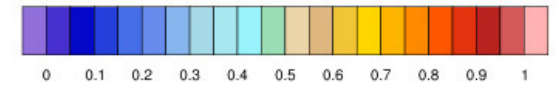
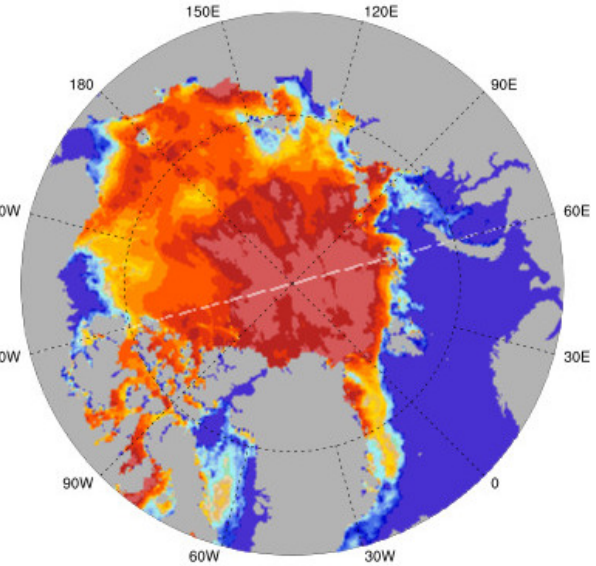
FMC_Testing/NEMS_Moorthi 2012-07-01

phyf048.tile3 icec



FV3: 100% ice along coastal areas

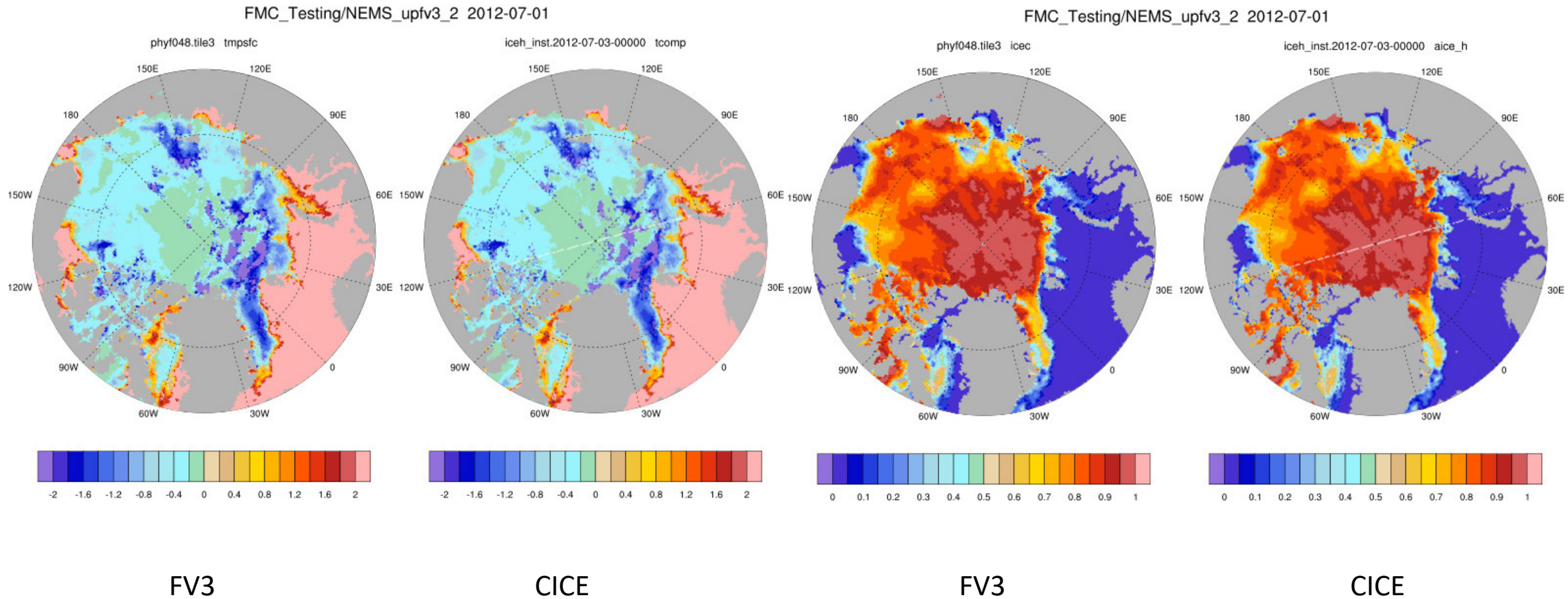
iceh_inst.2012-07-03-00000 aice_h



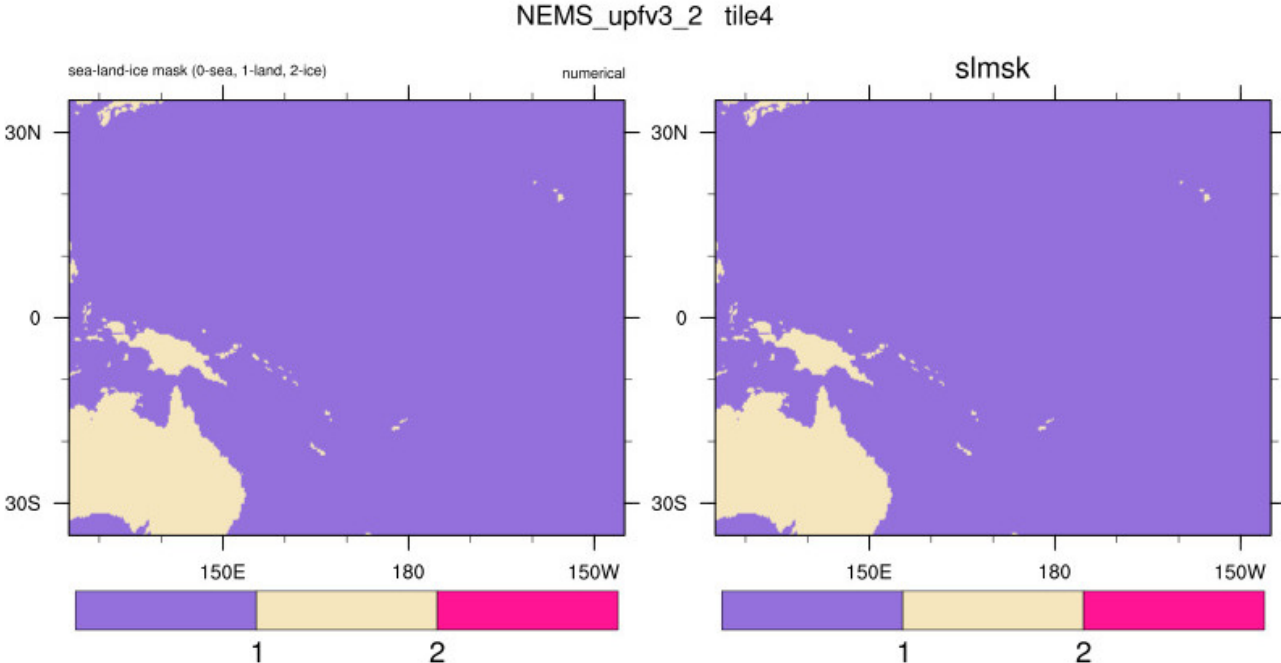
CICE

Try making 2 fixes only from current master (bugfix/cplfix_fix in my fork of FV3)

- Tsfco fix from Moorthi
- June 10 master replaces Moorthi's oro_data code in io/FV3GFS_io.F90



Land mask on tile 4 using bugfix/cplflx_fix in my fork of FV3



Land mask from
phyf006.tile4.nc

Land mask from
oro_data.tile4.nc